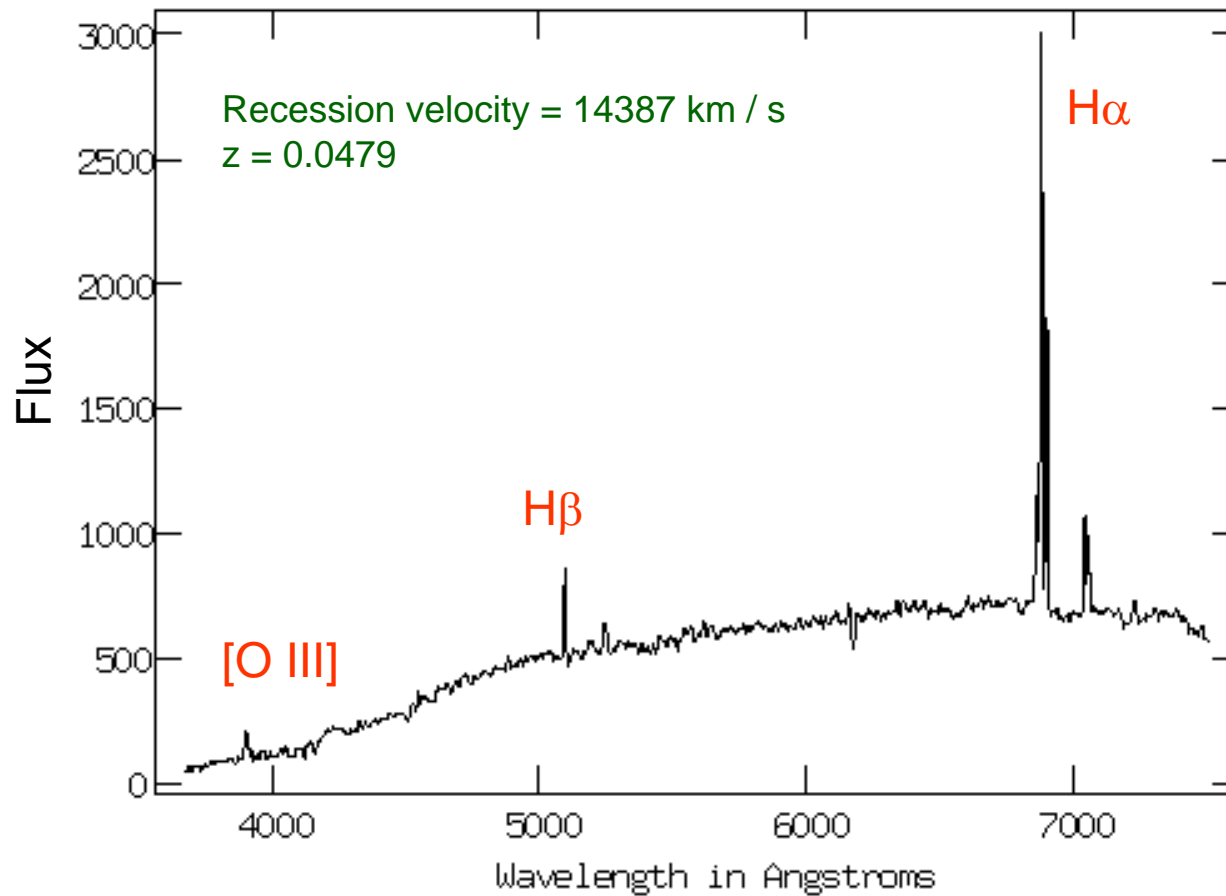


Optical Spectrum of a Galaxy

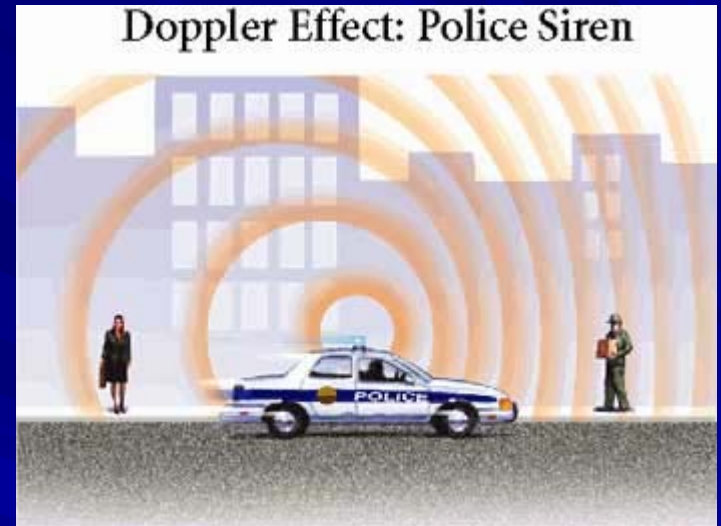
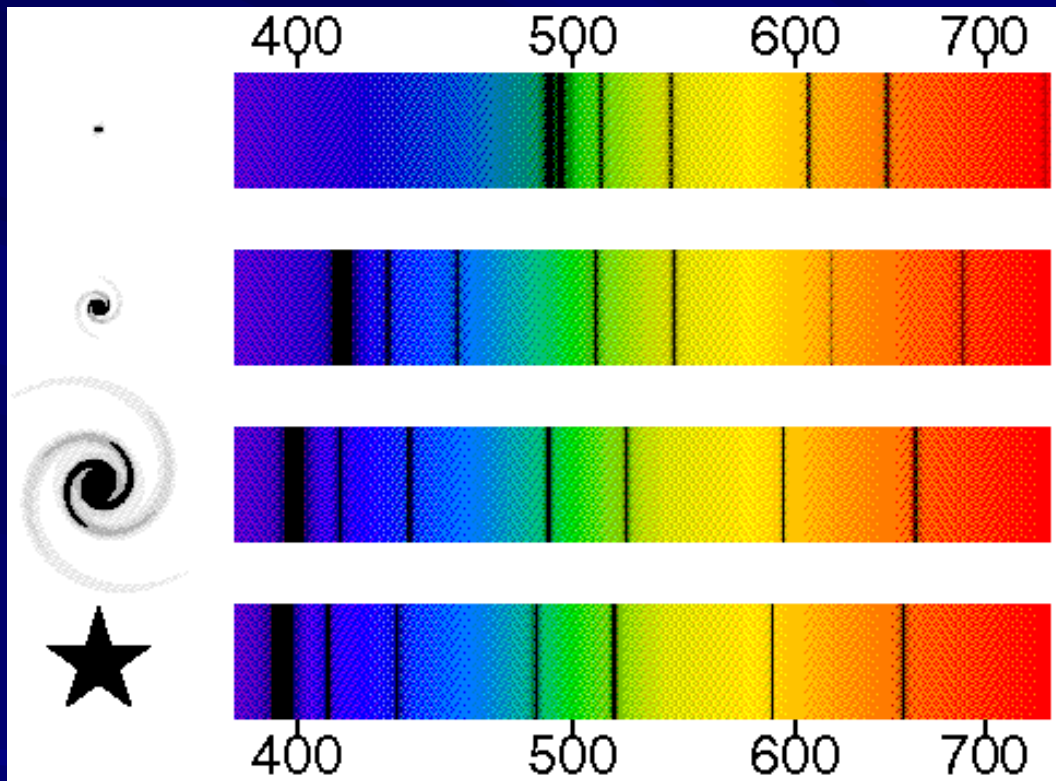
IRAF rvsao.emsao 2.0b mirk@xena Tue 16:16:29 06-May-97
311.062165



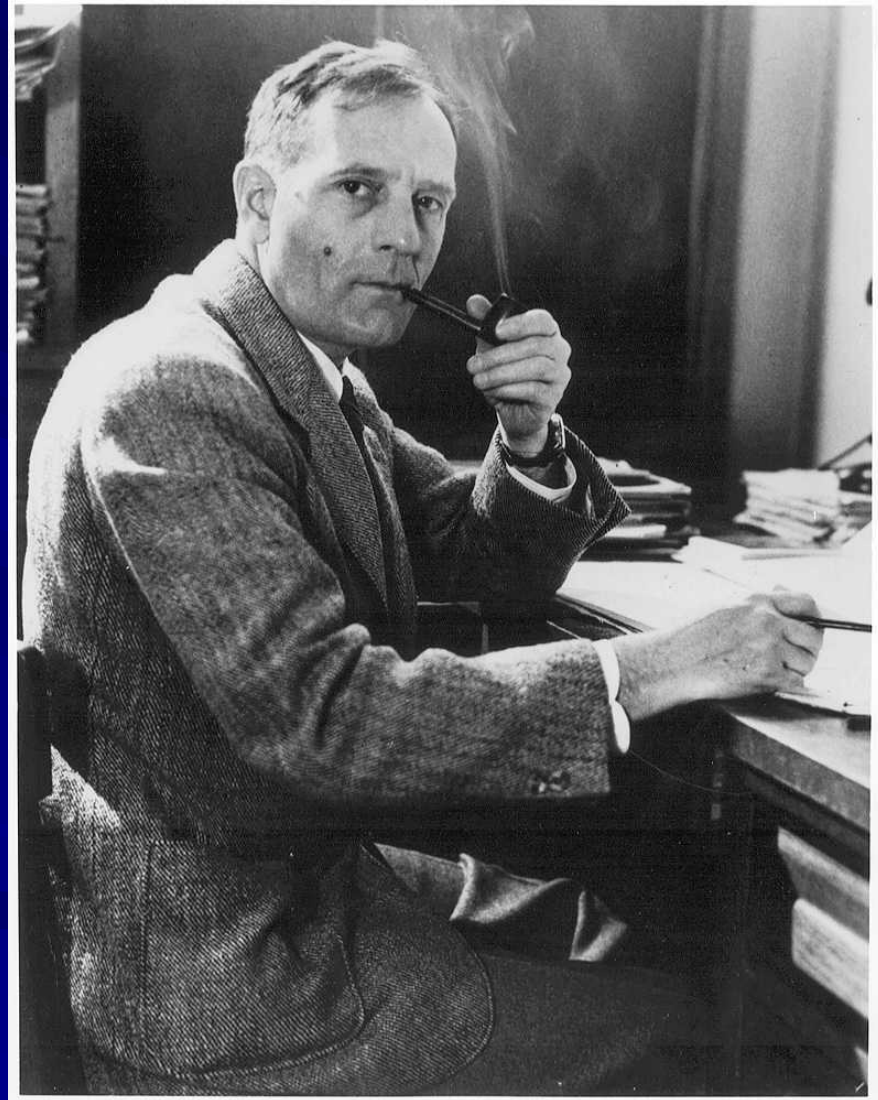
Vesto Slipher



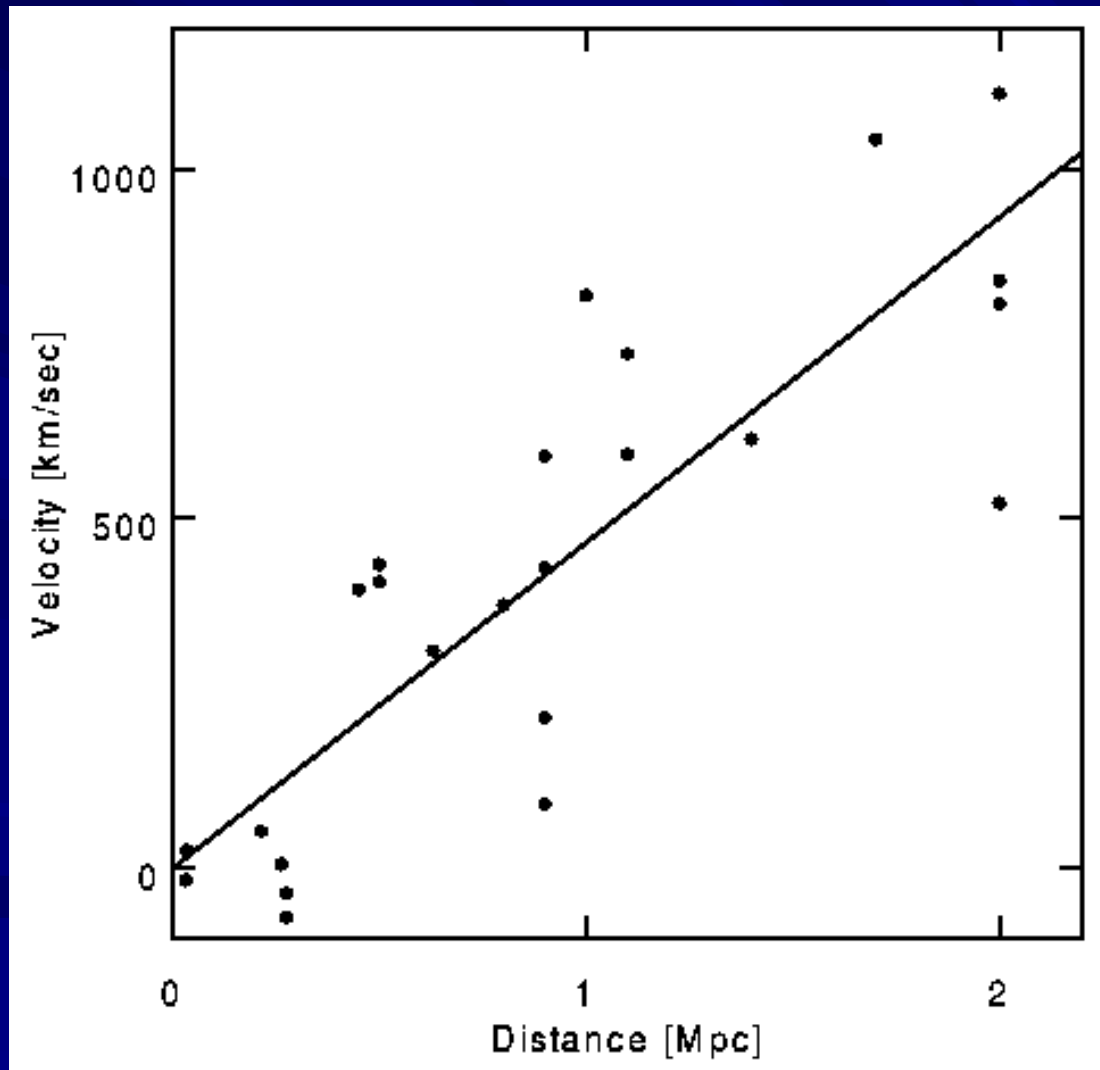
Redshifted Spectra



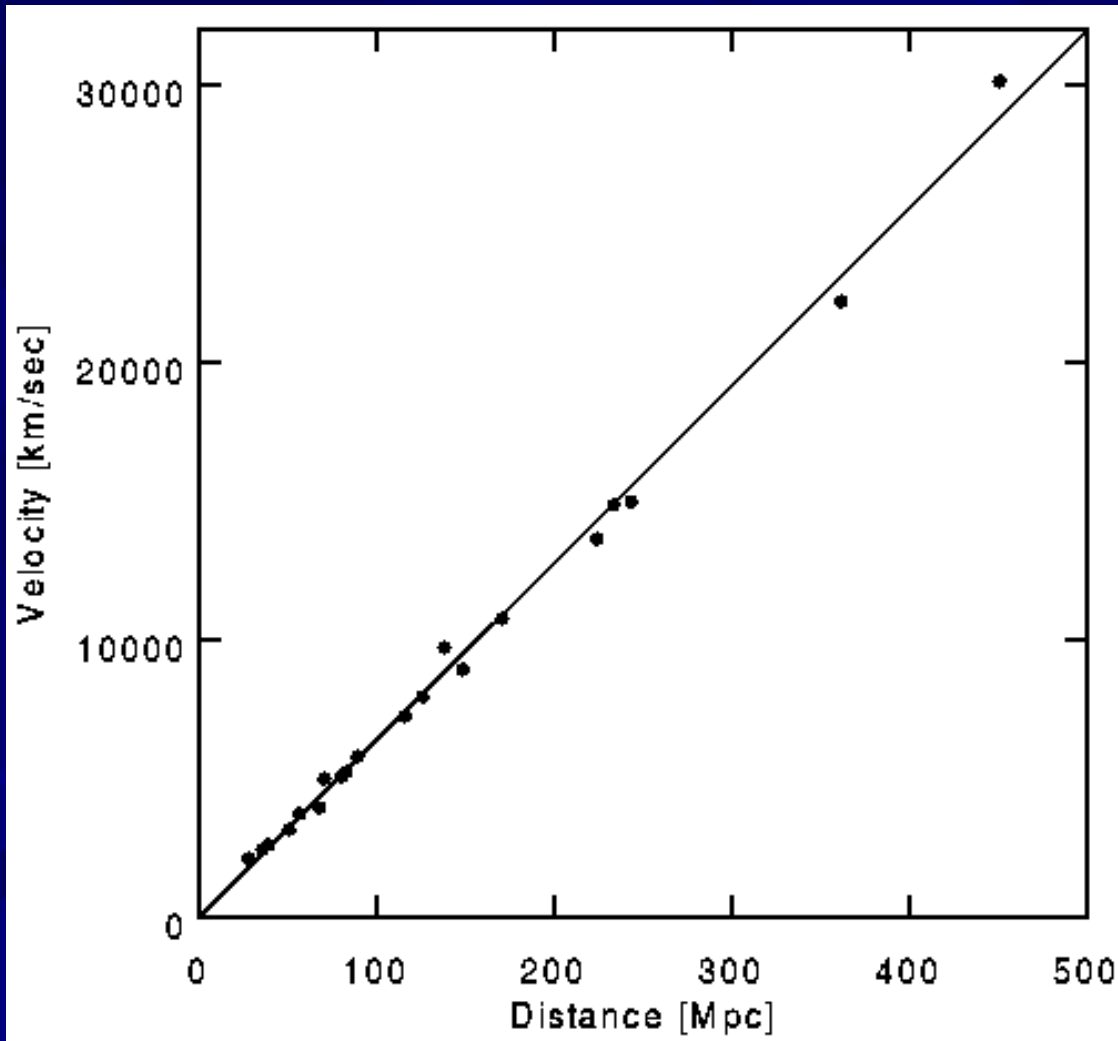
Edwin Hubble



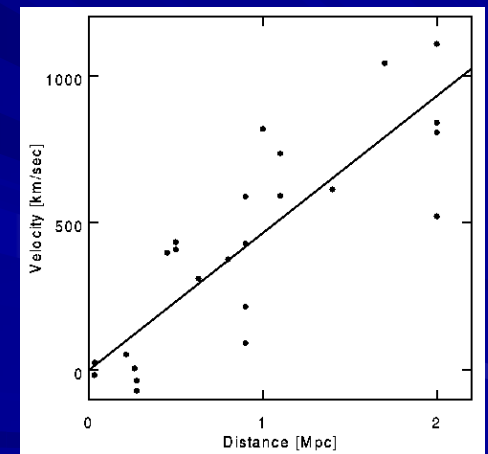
The Original Hubble Law



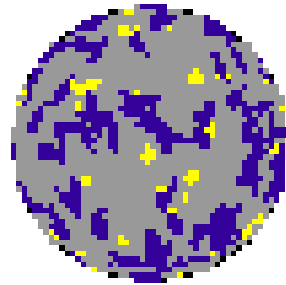
Modern-Day Hubble Law



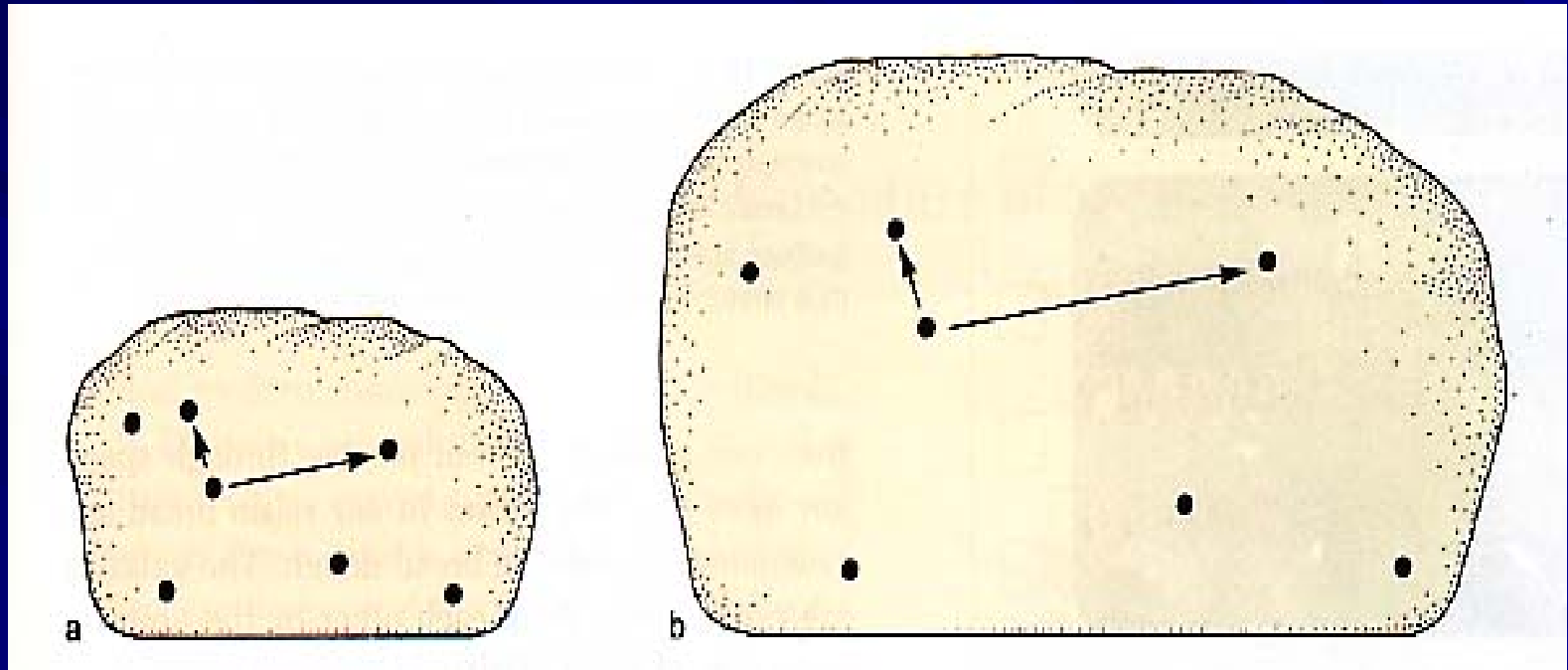
Today our best value for the Hubble constant is 70 ± 5 km / s / Mpc.



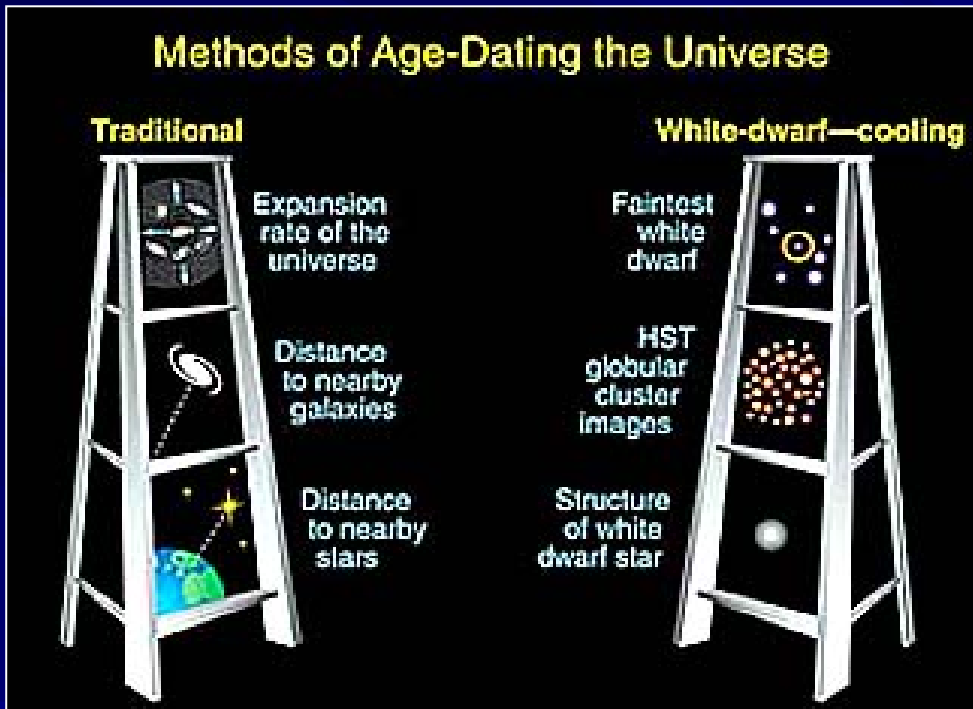
Balloon Analogy



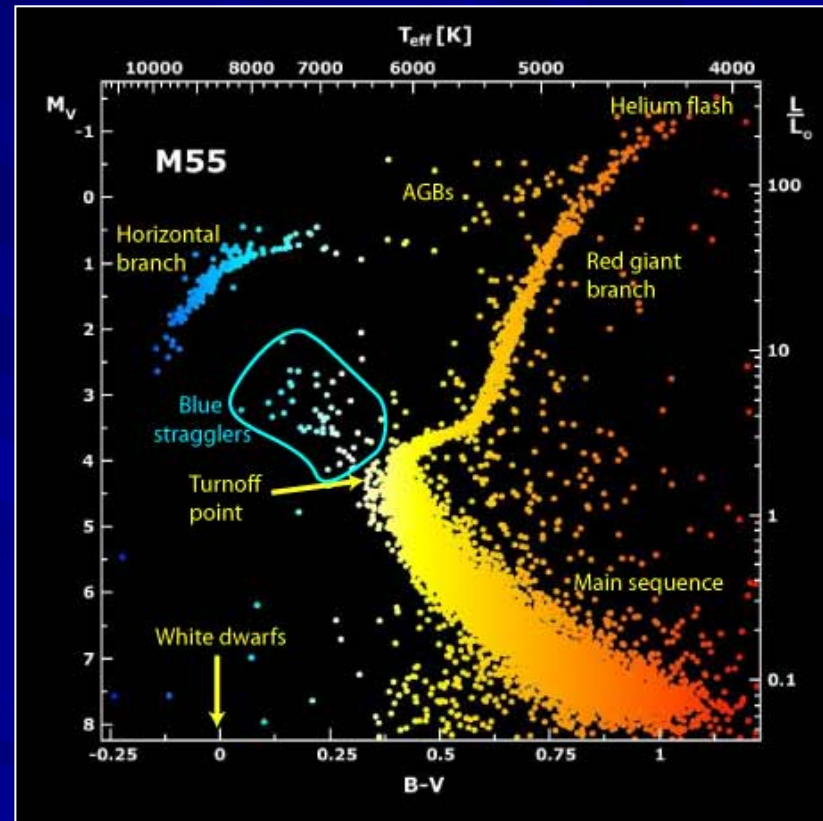
Raisin-Bread Analogy



Measuring the Ages of the Oldest Objects in the Universe



Color-Magnitude Diagram for a Globular Cluster



The age of the Universe is thought to be 13.7 Gyr.

The oldest globular clusters are about 12.6 Gyr old.

So things seem consistent!